

# DISCOVERER AMERICAS

## ULTRA-DEEPWATER DUAL-ACTIVITY DRILLSHIP



### For additional information please contact:

Transocean  
Marketing Department  
4 Greenway Plaza  
Houston, TX 77046, USA  
Phone: + 1-713-232-7500  
Fax: + 1-713-232-7880  
[marketing@deepwater.com](mailto:marketing@deepwater.com)  
[www.deepwater.com](http://www.deepwater.com)

### General Description

<b>Design / Generation</b>	Transocean Offshore Enhanced Enterprise Class
<b>Constructing Shipyard</b>	Daewoo Shipbuilding and Marine Engineering Korea
<b>Year Entered Service / Significant Upgrades</b>	2009
<b>Classification</b>	DNV +1A1
<b>Flag</b>	Marshall Islands
<b>Dimensions</b>	835 ft. long x 125 ft. wide x 62 ft. deep
<b>Drafts</b>	42.6 ft. operating / 39 ft. transit
<b>Accommodation</b>	200 persons
<b>Displacement</b>	98,421 st operating
<b>Variable Deck</b>	22,046 st operating / 22,046 st transit
<b>Transit Speed</b>	up to 12 knots
<b>Maximum Water Depth</b>	12,000 ft. designed / 10,000 ft. outfitted
<b>Maximum Drilling Depth</b>	40,000 ft

### Drilling Equipment

<b>Derrick</b>	NOV Dual Activity derrick, 226 ft. high, with 80 ft. x 80 ft. base.
<b>Hookload Capacity</b>	(Main) 2,500,000 lbs. gross nominal capacity (Aux) 2,500,000 lbs. gross nominal capacity
<b>Drawworks</b>	(Main): NOV Active Heave Drawworks with 6 x General Electric GEB-22A2 motors rated at 6,900 total hp. 1,050 st rated hook load with 2 inch drill line (Aux): NOV Active Heave Drawworks with 6 x General Electric GEB-22A2 motors rated at 6,900 total hp. 1,050 st rated hook load with 2 inch drill line.
<b>Compensator</b>	(Main) Active Heave Drawworks (Aux) Active Heave Drawworks
<b>Rotary Table</b>	(Main) NOV/RST 75.5 inch opening rated to 1,375 st. also with a maximum generated torque rating of 45,000 ft/lbs. (Aux) NOV/RST 605 with a 60.5 inch opening and a rated capacity of 1,000 st. also with a maximum generated torque rating of 45,000 ft/lbs.
<b>Top Drive</b>	(Main) Maritime Hydraulics/MDDM-1250-AC with a rated capacity of 1,250 st. driven by 2 x electric ABB AMH423 LM6 AC motors with a maximum continuous torque rating of 101,200 continuous torque rating. (Aux) Same as main
<b>Tubular Handling</b>	2 x NOV PRS-5 pipe racking system, 2 x NOV Riser & Casing PRS Tailing head, 1 x NOV Riser Tailing Arm, 2 x NOV AR 4500 iron roughnecks.
<b>Riser Feed</b>	2 x NOV riser handling system and able to handle 75 foot riser joints lengths.
<b>Mud Pumps</b>	4 x NOV Hex pumps, each driven by two Baylor VCM632RUT traction motors rated to 1,275 hp each.
<b>HP Mud System</b>	Rated for 7,500 psi
<b>Solids Control</b>	10 x Brandt LCM-3D CM2 shale shakers

### Power & Machinery

<b>Main Power</b>	6 x MAN B&W 14V 32/40 diesel engines rated to 6,720 kW and 11,000 volts, driving 6 x LDW-Siemens S5E1250-10SE+wk generators rated 6.456 kW
<b>Emergency Power</b>	1 x STX-MAN-B&W 4 stroke 7 cylinder with a maximum output of 3,098 hp, driving a Hyundai generator rated at 2,100 kW.
<b>Power Distribution</b>	Siemens 11 Kv switch board feeding Siemens blue variable speed drive, PWM type generator protection.

### Storage Capacities

<b>Fuel Oil</b>	32,594 bbl
<b>Liquid Mud</b>	7,890 bbls. Active / 11,568 bbls. Reserve
<b>Base Oil</b>	11,095 bbl
<b>Brine</b>	11,095 bbl
<b>Drill Water</b>	12,283 bbl
<b>Potable Water</b>	7,500 bbl
<b>Bulk Material</b>	(mud + cement) 32,000 cu.ft.
<b>Sack Storage</b>	16,000 sacks

### BOP & Subsea Equipment

<b>BOP Rams</b>	Hydril Compact Dual Ram 18-3/4 inch 15,000 psi BOP utilizing 3 x double ram preventers
<b>BOP Annulars</b>	Hydril GX 18-3/4 inch 10,000 psi annular preventer on LMRP
<b>BOP Handling Marine Riser</b>	Subsea Venture Inc. BOP skid carts system rated at 340 mt. Vetco / HMF-G with a 21 inch OD, average length per joint: 75 feet.
<b>Tensioners</b>	6 x Hydrilift tensioners rated to 800,000 lbs. with a maximum stroke of 50 feet.
<b>Diverter</b>	Vetco CSO 60 inch rated to 500 psi with 16 inch outlets
<b>Tree Handling</b>	3 x SVI Xmas tree skid carts rated to 90 mt. each.
<b>Moonpool</b>	73 ft. length x 30 ft. width.

### Station Keeping / Propulsion System

<b>Thrusters</b>	6 x Rolls Royce thrusters 360 degree azimuthing rated to 7,000 hp. With fixed blades
<b>DP System</b>	Kongsberg-Simrad triple-redundant K-POS-32 dynamic positioning system. Full DP

### Cranes

<b>Cranes</b>	4 x NOV Pedestal OC 4000KCE Electro Hydraulic cranes rated to 100 mt at a 26.2 radius
<b>Riser Handling</b>	2 x NOV Riser Yoke 30mt Capacity, 2 x NOV Turning Device
<b>Casing/DP</b>	1 x NOV Gripper Claw Yoke, 1 x NOV Magnet Yoke

### Other Information

<b>Helideck</b>	Rated for Sikorsky S-61 or Chinook 234 helicopters. 75ft. x 90ft.
-----------------	---

Revision Date: 20 December 2016

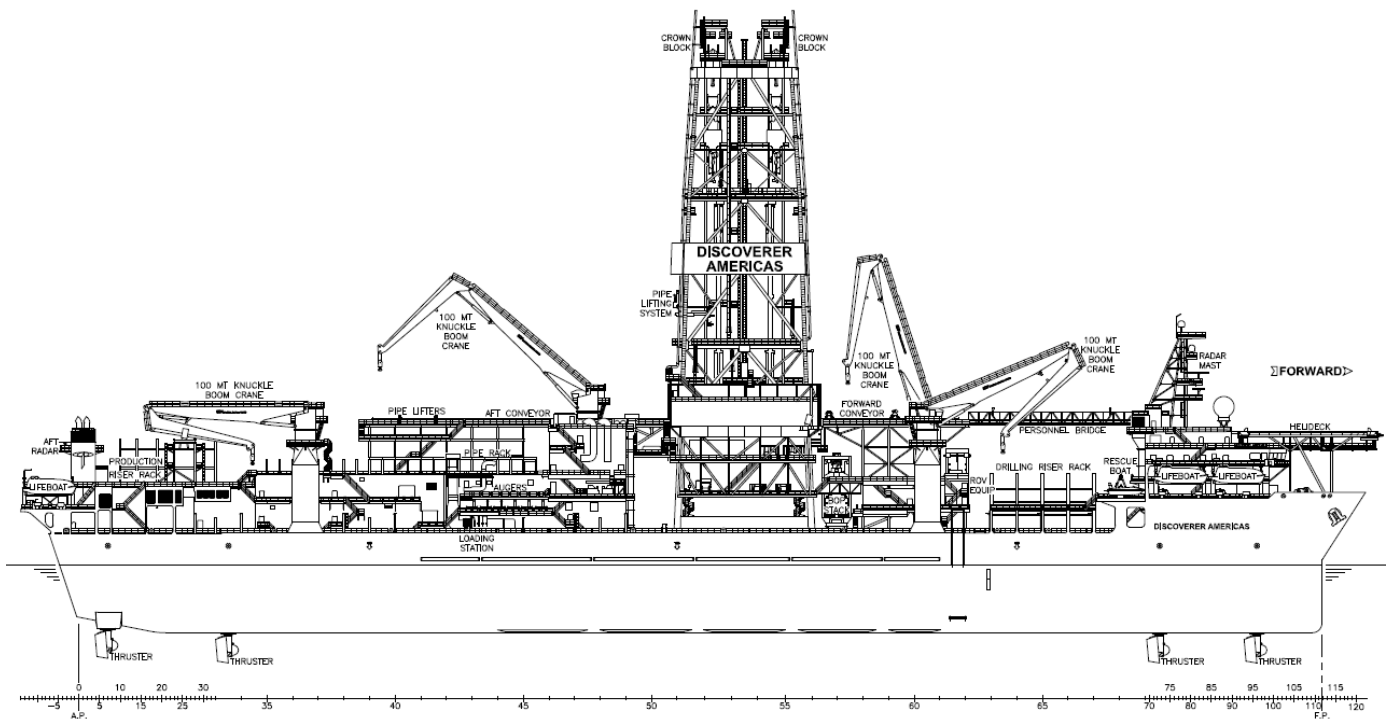
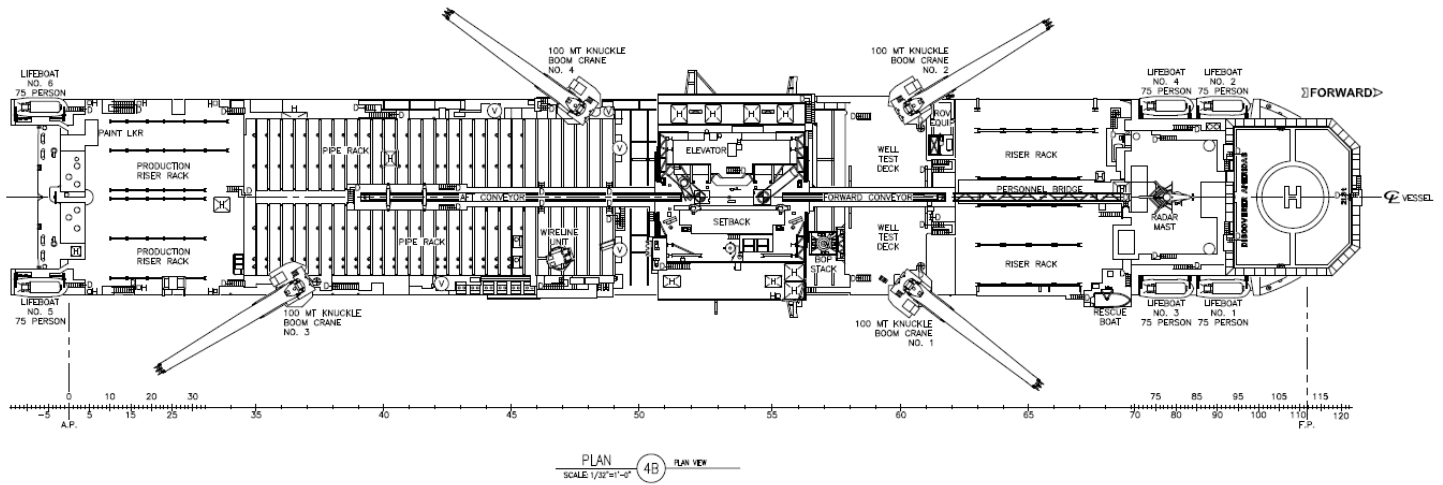


These specifications are intended for general reference purposes only, as actual equipment and specifications may vary based upon subsequent changes, the contract situation and customer needs. All equipment shall be operated and maintained at all times, in compliance with Transocean standard operating manuals, policies and procedures, and within its stated operational limits or continuous rated capacity, in order to assure maximum operational efficiency.

Patent Notice: This rig, its systems, components, and/or equipment in use on this rig, may be protected by one or more US and/or foreign patents.

# DISCOVERER AMERICAS

ULTRA-DEEPWATER DUAL-ACTIVITY DRILLSHIP



# BOUNDLESS

SERVICE FOCUSED  
DATA DRIVEN  
PERFORMANCE ORIENTED

Revision Date: 20 December 2016



These specifications are intended for general reference purposes only, as actual equipment and specifications may vary based upon subsequent changes, the contract situation and customer needs. All equipment shall be operated and maintained at all times, in compliance with Transocean standard operating manuals, policies and procedures, and within its stated operational limits or continuous rated capacity, in order to assure maximum operational efficiency.

Patent Notice: This rig, its systems, components, and/or equipment in use on this rig, may be protected by one or more US and/or foreign patents.