

# DISCOVERER LUANDA

ULTRA-DEEPWATER DUAL-ACTIVITY DRILLSHIP



**For additional information  
please contact:**

Transocean  
Marketing Department  
4 Greenway Plaza  
Houston, TX 77046, USA  
Phone: + 1-713-232-7500  
Fax: + 1-713-232-7880  
[marketing@deepwater.com](mailto:marketing@deepwater.com)  
[www.deepwater.com](http://www.deepwater.com)

## General Description

|   |   |
|---|---|
| Design / Generation                         | Transocean Enhanced Enterprise Class      |
| Constructing Shipyard                       | DSME                                      |
| Year Entered Service / Significant Upgrades | 2010                                      |
| Classification                              | DNV, +1A1                                 |
| Flag  | Marshall Islands                          |
| Dimensions                                  | 835 ft. long x 125 ft. wide x 62 ft. deep |
| Drafts                                      | 42.6 ft. operating / 42 ft. transit       |
| Accommodation                               | 220 persons                               |
| Displacement                                | 98,421 st operating                       |
| Variable Deck                               | 22,046 st operating / 22,046 st transit   |
| Transit Speed                               | up to 12 knots                            |
| Maximum Water Depth                         | 12,000 ft. designed / 7,500 ft. outfitted |
| Maximum Drilling Depth                      | 30,000 ft                                 |

## Power & Machinery

|                    |  |
|--------------------|--|
| Main Power         | 6 x MAN B&W V32/40 14 cylinder diesel engines rated at 7,000 kW; each driving 1 x 6,426 kVA LDW/Siemens S5E generator. |
| Emergency Power    | 1 x MAN B&W 7L27/38 diesel engine rated 2,310 kw each driving 1 x Hyundai 2,100 kW generator.                          |
| Power Distribution | Siemens 11kV switchboards with Siemens Blue variable speed generator protection.                                       |

## Storage Capacities

|               |                              |
|---------------|------------------------------|
| Fuel Oil      | 36,000 bbl                   |
| Liquid Mud    | 20,000 bbl Active            |
| Base Oil      | 9,215 bbl                    |
| Brine         | 20,288 bbl                   |
| Drill Water   | 13,700 bbl                   |
| Potable Water | 5,000 bbl                    |
| Bulk Material | (mud + cement) 32,000 cu.ft. |
| Sack Storage  | 16,000 sacks                 |

## Drilling Equipment

|                   |   |
|-------------------|---|
| Derrick           | NOV Dual Activity derrick, 226 ft. high, with 80 ft. x 80 ft. base.   |
| Hookload Capacity | (Main) 2,500,000 lbs. gross nominal capacity<br>(Aux) 2,500,000 lbs. gross nominal capacity   |
| Drawworks         | (Main) 1 x NOV AHC rated at 750 st and with 2 inch drilling lines.<br>(Aux) 1 x NOV AHC rated at 500 st and with 2 inch drilling lines.   |
| Compensator       | (Main) Active Heave Drawworks above<br>(Aux) Active Heave Drawworks above   |
| Rotary Table      | (Main) NOV 75-1/2 inch hydraulic with a maximum continuous torque rating of 45,000 ft-lbs, and a static load capacity of 1,375 st.<br>(Aux) NOV RST 60.5 inch opening and a rated capacity of 1,000 st; and a maximum continuous torque of 45,000 ft-lbs. |
| Top Drive         | (Main) Maritime Hydraulics MDDM 1000, rated to 1,000 st and 62,900 ft.-lbs. of continuous drilling torque in low gear.<br>(Aux) Same as above   |
| Tubular Handling  | 2 x PRS-5 pipe racking system, 2x NOV AR 4500 Iron Roughnecks, 3-1/2 inch to 9-3/4 inch tubulars.   |
| Mud Pumps         | 3 x NOV 14-p-220 TRIPLEX pumps, each driven by 2 x NOV AC CM628TUT traction motors.   |
| HP Mud System     | Rated for 7,500 psi   |
| Solids Control    | 6 x Axiom AX-1 triple deck shale shakers  |

## BOP & Subsea Equipment

|               |   |
|---------------|---|
| BOP Rams      | 3 x Hydril 18-3/4 inch 15,000 psi Compact Double Ram Preventers (1 x 6-ram preventer)             |
| BOP Annulars  | 1 x Hydril 18-3/4 inch 10,000 psi Annuflex annular preventer.                                     |
| BOP Handling  | Skid system comprised of 3 x 350 st BOP carts and 2 sets of spider beams rated to 350 st per set. |
| Marine Riser  | Vetco HMF 21 inch OD x 75 ft long with 15,000 psi chokes and kill lines.                          |
| Tensioners    | 6 x Hydrilift tensioners rated at 400 st each, and a 50 ft. stroke.                               |
| Diverter      | Vetco CSO diverter with a 72 inch bore 500 psi and 2 x 16 inch flow lines                         |
| Tree Handling | 3 x 100 st Xmas Tree/Auxiliary carts  |
| Moonpool      | 72 ft. length x 30 ft. width.   |

## Station Keeping / Propulsion System

|           |   |
|-----------|---|
| Thrusters | 6 x Rolls Royce Aquamaster 7,000 hp fully azimuthing. |
| DP System | Kongsberg-Simrad / Triple-redundant                   |

## Cranes

|                  |  |
|------------------|--|
| Cranes           | 4 x NOV Pedestal OC 4000KCE Electro Hydraulic cranes rated to 100 mt at a 26.2 radius            |
| AHC Subsea Crane | 1 x 165 mt Hydrilift Active Heave Compensated crane with a subsea capacity of 120 mt at 2,400 m. |

## Other Information

|          |                                   |
|----------|-----------------------------------|
| Helideck | Rated for Chinook 234 helicopters |
|----------|-----------------------------------|

Revision Date: 29 August 2014

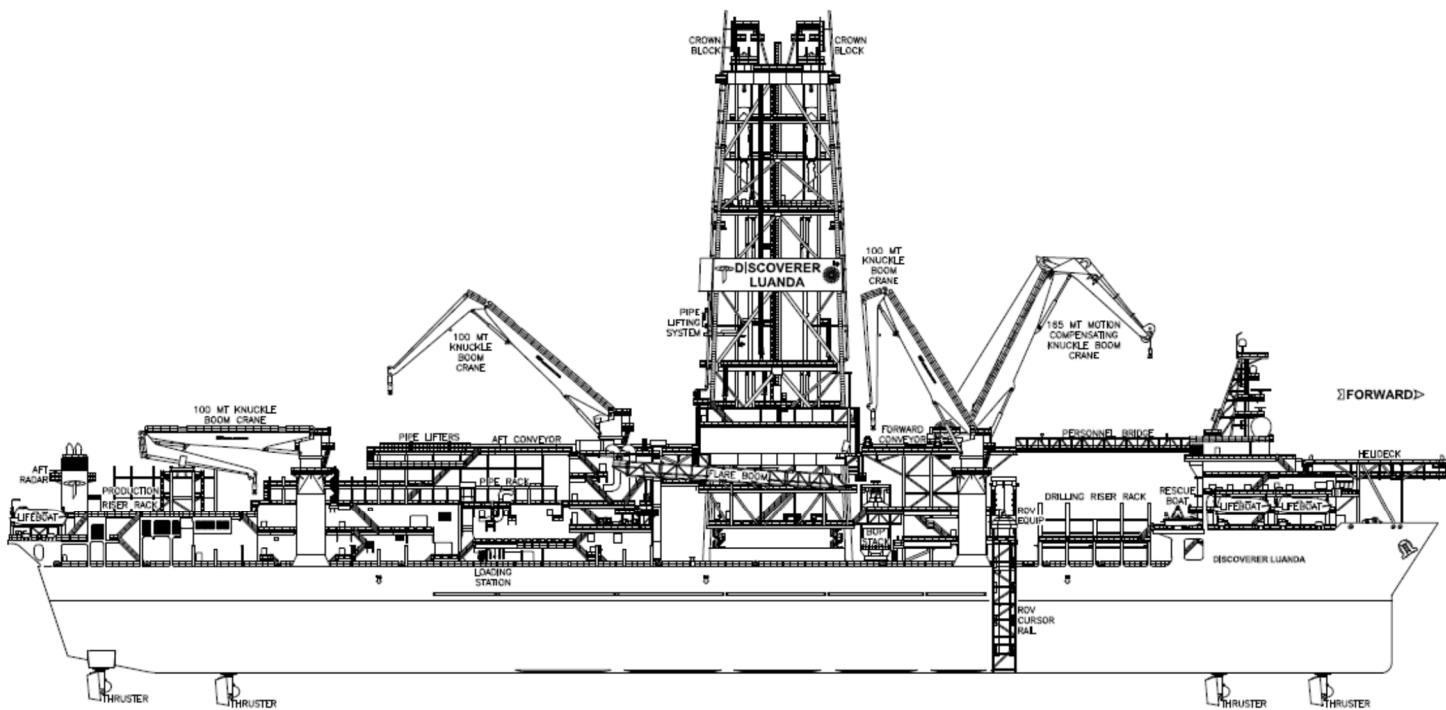
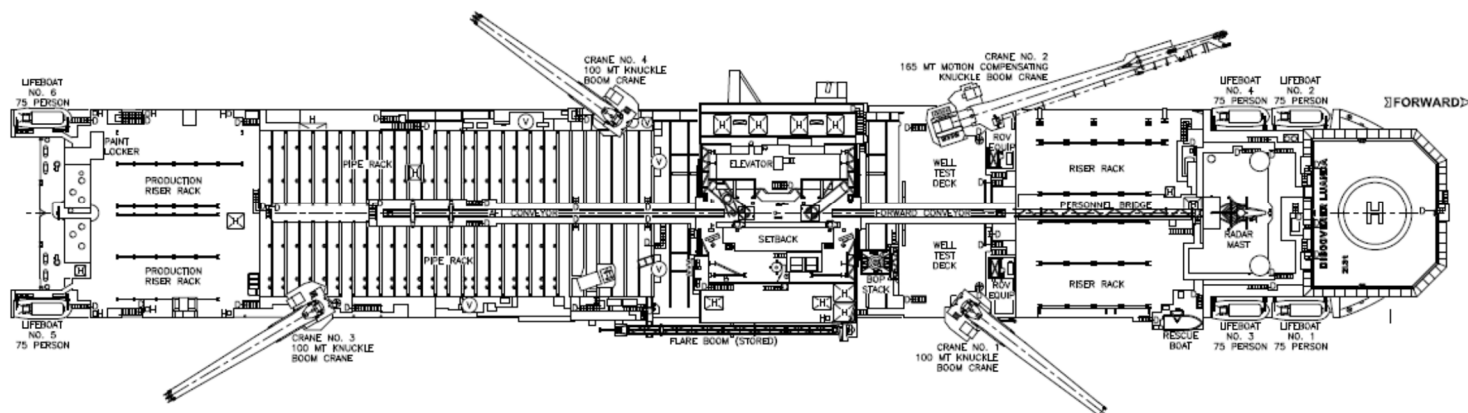


These specifications are intended for general reference purposes only, as actual equipment and specifications may vary based upon subsequent changes, the contract situation and customer needs. All equipment shall be operated and maintained at all times, in compliance with Transocean standard operating manuals, policies and procedures, and within its stated operational limits or continuous rated capacity, in order to assure maximum operational efficiency.

Patent Notice: This rig, its systems, components, and/or equipment in use on this rig, may be protected by one or more US and/or foreign patents.

# DISCOVERER LUANDA

ULTRA-DEEPWATER DUAL-ACTIVITY DRILLSHIP



# BOUNDLESS

SERVICE FOCUSED  
DATA DRIVEN  
PERFORMANCE ORIENTED

Revision Date: 29 August 2014



These specifications are intended for general reference purposes only, as actual equipment and specifications may vary based upon subsequent changes, the contract situation and customer needs. All equipment shall be operated and maintained at all times, in compliance with Transocean standard operating manuals, policies and procedures, and within its stated operational limits or continuous rated capacity, in order to assure maximum operational efficiency.

Patent Notice: This rig, its systems, components, and/or equipment in use on this rig, may be protected by one or more US and/or foreign patents.